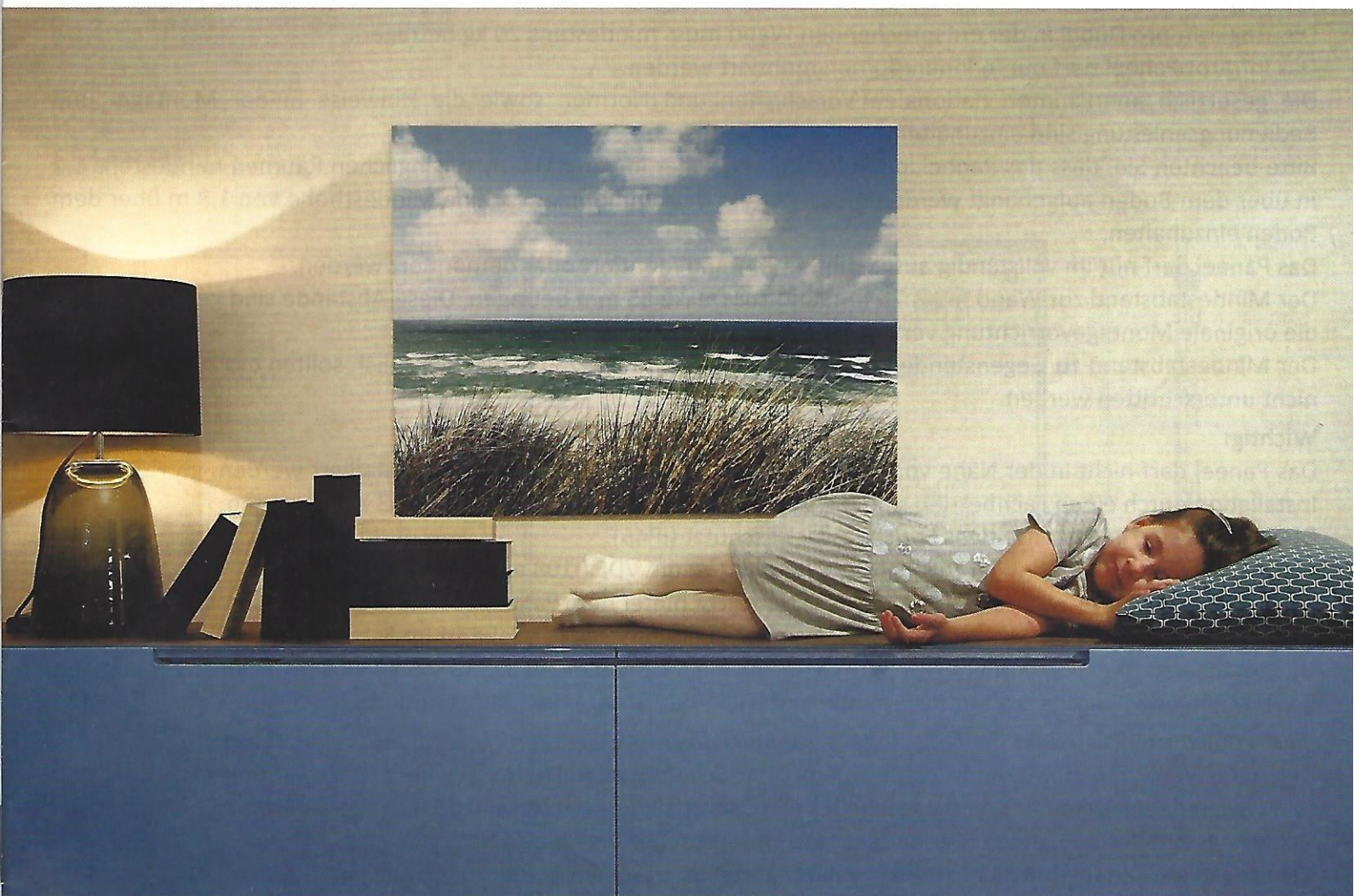


HEAT 4ALL

INFRAROTHEIZUNGEN



HEAT4ALL ICONIC + SMARTLINE INFRARED HEATING

Mounting Manual (Panel)

Heat4All ICONIC Infrared Heating Mounting Manual (Panel)

Step 1:

Please make sure that the included wall plugs and screws can be used in your wall or ceiling. We will not be liable for any damages resulting from the mounting of our panels. Any such damages do not fall under our warranty. Further, we will not be liable for any consequential damages.

Important:

The minimum load per wall plug needs to be 20 kg or higher.

The infrared panel may only be mounted indoors.

Any legally binding national regulations and norms as well as the instructions in the mounting and operation manual must be strictly adhered to.

Please note that panels used in nurseries and rooms accessible to children need to be mounted at least 1.2 m above the ground. When mounting the panel on the ceiling, the minimum height is 1.8 m above the ground.

The panel may only be mounted or dismantled if completely cooled off.

The minimum distance to the wall and the ceiling needs to be 25 mm. You will automatically adhere to these minimum distances when using the original mounting kit.

The minimum distance between the panel and other objects or furniture should be 40 cm. To the sides a minimum distance of 20 cm should be kept.

Important:

The panel may not be mounted in the immediate proximity of tubs, showers or pools. If mounted by a specialist, the VDE 0100 part 701, part 702 and part 703 has to be applied.

The panels are protected against multi-directional splash water (IP45).

When installing the panel in publicly accessible rooms, the VDE 0108 has to be applied.

The socket used to power the panel may not be located behind the panel. In wet and bathrooms the socket needs to be located outside the protection areas 0, 1 and 2. The panel may be mounted in protection area 2.

UK amendment: Regulation 701.512.3 permits 230 V socket outlets to be installed in a room containing a bath or shower, providing they are installed 3m horizontally from the boundary of zone 1.

A power cut-off system or the free access to the power plug needs to be secured at all times.

During operation via switches or thermostats the mains plug has to be controllable off-power at all times. If the heating element is controlled directly, make sure there are ways to cut the power at any time, e. g. using a safety switch or RCD.

Drilling into the panel is prohibited and will destroy it. Should you drill into the panel, its safe operation can no longer be guaranteed and it may no longer be connected to power.

The panel may be mounted on walls and ceilings.

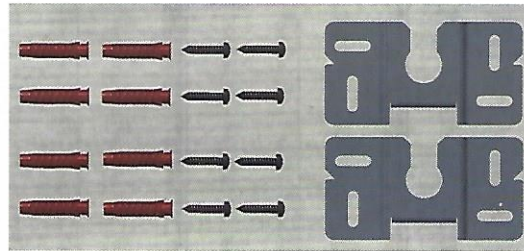
Exceptions:

Mounting our Picture Panels (BH-xxx), Glass Picture Panels (GB-xxx) or Decor Glass Panels (GH-xxx) on the ceiling is only allowed using the fitting original frame.

Ceiling-mounting our Mirror Panels (SH-xxx) is prohibited.

Step 2:

Using a level, draw two crosses spaced at distance 'A' on your wall or ceiling. This distance between the two mounts is crucial in order to allow for the panel to properly interlock with them.



The mounting kit includes:

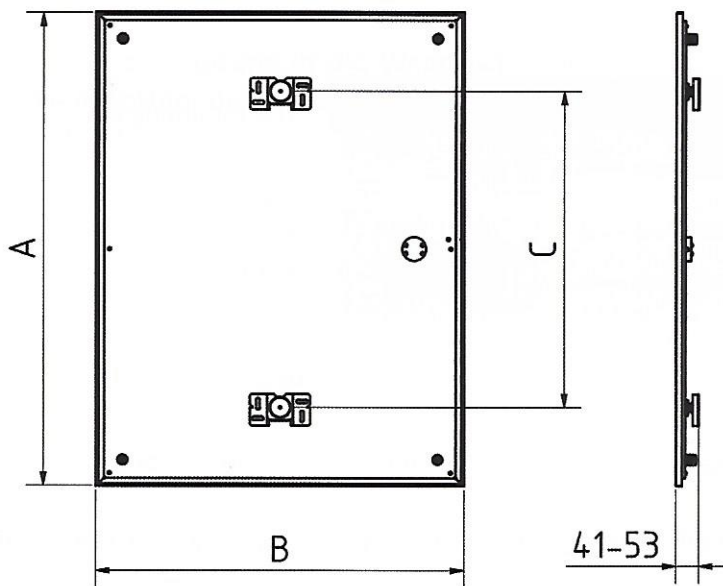
2 wall mounts

8 screws

8 wall plugs

Take one of the wall mounts and position it above the first cross. Mark the spots for the eight drill holes for mounting your infrared panel. If you are mounting the panel on your wall, make sure the mounts open to the top.

ICONIC:



Variants ICONIC				
Type	A	B	C	Power
xx-250	600	300	300	200W
xx-350	900	300	600	310W
xx-420	600	600	300	350W
xx-540	800	600	300	450W
xx-750	900	700	600	600W
xx-820	1700	400	900	710W
xx-870	1195	595	900	730W
xx-900	1000	800	600	780W
xx-1200	1200	800	900	1000W
xx-1250	1600	600	900	1000W

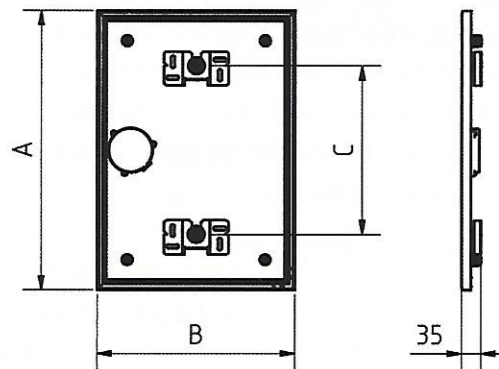
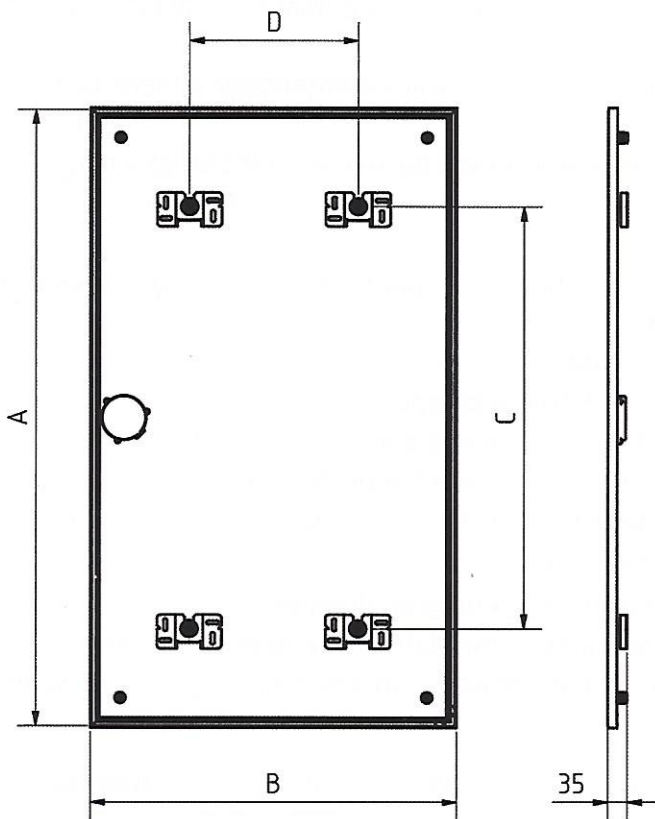
xx ... CL, BH, GB, GH, SH

Nominal Voltage 230V

Frequency 50-60Hz

Protection IP45

SMARTLINE:



Variants SL					
Type	A	B	C	D	Power
SL-175	495	350	300	-	170W
SL-320	595	595	300	-	320W
SL-520	950	615	600	300	520W
SL-700	1100	650	750	300	700W
SL-1000	1240	815	900	400	1000W

Nominal Voltage 230V

Frequency 50-60Hz

Protection IP45

Step 3:

Drill the eight holes at the spots you marked and insert the wall plugs.

Step 4:

Separate the two wall mounts by repeatedly bending them along the separator line in the middle. (see fig. 1).



fig. 1

Step 5:

Place the wall mounts on the wall or ceiling, put the screws through the slots into the wall plugs and screw them in as far as possible (see fig. 2).

Step 6:

Before putting the panel into the wall mounts, be sure all 4 spacers on the rear are screwed in as far as possible.

Step 7:

Put the infrared panel into the mounts (see fig. 3).

Due to the conical shape of the round panel mounts, the panel can be pulled forward into the wall mounts in order to lock it in position. When mounting the panel on your wall, slightly lifting it can be helpful in doing so.

Step 8:

Turn the four spacers on the rear to screw them out (towards the wall or ceiling) until they touch the wall and properly stabilize the panel. The panel mounts will interlock with the wall mounts. Please make sure all four spacers are set to the same distance.

Step 9:

Make sure the panel can no longer be removed from the wall and is properly secured.

You can now plug the panel into the power socket and turn it on.

Dismounting:

Remove the power plug from the socket to cut the power supply.

Now screw the 4 spacers on the rear in as far as they will go so that the panel will unlock. It can now be removed from the wall mounts.

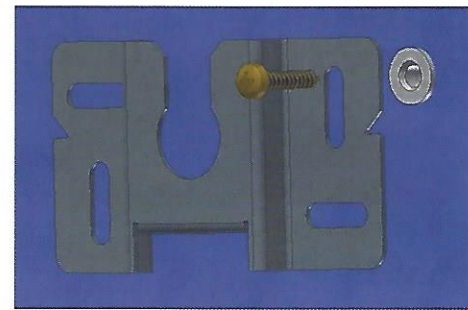


fig. 2

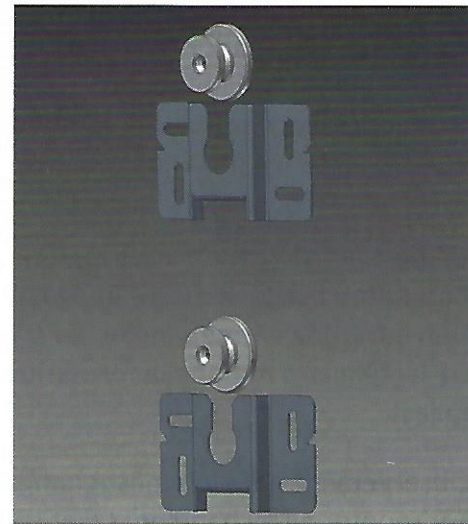


fig. 3