



[www.heat4all.com](http://www.heat4all.com)

**IMPRINT**

Heat4All Vertriebs GmbH  
Brühlerstrasse 73B/Haus 7/Top 5  
2340 Mödling, Austria

[office@heat4all.com](mailto:office@heat4all.com)  
[www.heat4all.com](http://www.heat4all.com)

Image source: Bigstock

MANUFACTURER INFRARED HEATERS:  
Rudolf KOLLER Ges.m.b.H.  
Rudolf-Koller-Straße 1,  
3902 Vitis, Austria

PRINT, PUNCTUATION AND OTHER ERRORS RESERVED



# HEAT4ALL SMARTLINE INFRARED HEATING

Product Catalogue



Nice to heat you...



All conventional heating systems, such as wood, gas, pellets, oil or heat pumps, work according to the principle of convection heat. Applying convection heat means heating the air in a room, which then, in turn, warms the people and objects in the room. This principle leads to an uneven and usually uncomfortable distribution of heat within the room as well as high heat losses due to air constantly flowing in and out of the room.

As warm air rises up, convection heat further causes low temperatures near the floor and high temperatures near the ceiling. This means that, before people in the room can even begin to feel warm, the entire air volume within the room has to be heated. Whenever one opens a window while heating, part of this warm air escapes the room and has to be heated yet again. Additionally, the high differences in temperature between the floor and the ceiling areas cause air and dust swirls, which may be especially problematic for allergic or sensitive people. Heating the air further results in uncomfortably low humidity.

Infrared heaters, on the other hand, do not warm the air but instead use direct heat, warming the walls as well as all bodies and objects within a room. The heat stored within these walls and the furniture is then re-emitted evenly. All this constitutes a completely natural process, just like when heating with a tile stove or when basking in the sun. When using an infrared heater, people in the room will start to feel warm mere minutes after turning the panels on while the air will not be overheated and thus dried out. Neither will there be any air or dust swirls as the heat is distributed evenly within the room. Opening a window, fresh air can be let in without any adverse effects as the heating effect is independent of the air temperature and flow. Thanks to the heat emitted by the infrared heater itself as well as the heated objects within the room, the perceived room temperature is about 2-3° C warmer than when using convection heating. This means that, in comparison, shorter heating periods and lower target temperatures are required to achieve the same heating effect. The gentle infrared heat thus allows for more comfort and reduced heating costs thanks to its faster heating effect as well as fewer required hours of operation.

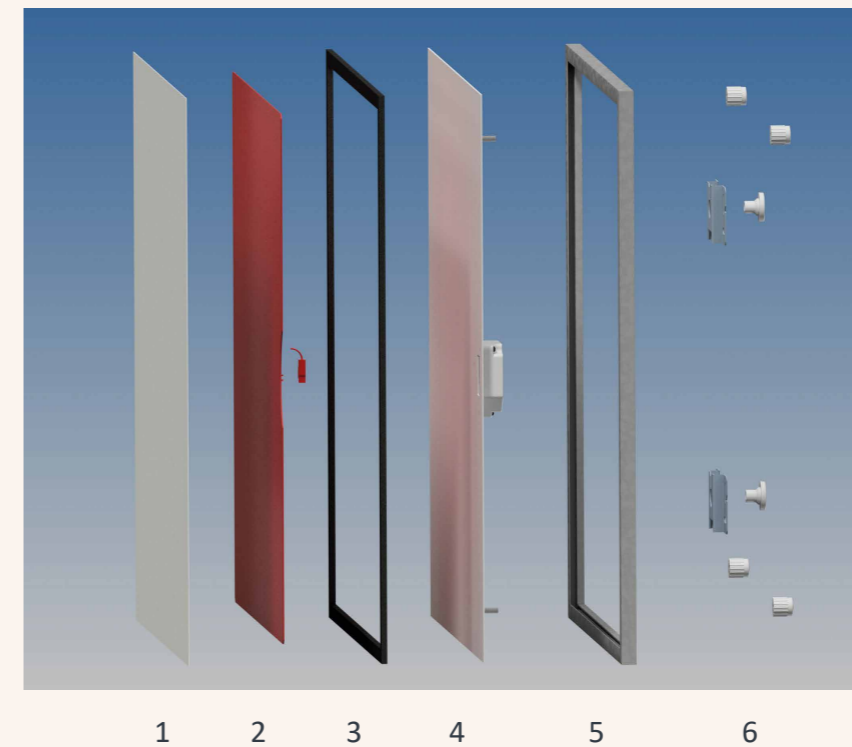
## Simple structure, high efficiency

If you are already familiar with Heat4All Infrared Heating, you will know about our panels' advantages: Lowest costs, highest efficiency and your greatest well-being while using them thanks to their ability to create an ideal room climate. In addition, our infrared heaters help to improve your ecological footprint - by being energy efficient and allowing for the use of sustainable energy sources, by means of their long life-cycle as well as the possibility to move or expand on your heating system whenever you need to.

While our main line ICONIC focusses, among other things, on great design, our SmartLine most of all aims to provide the best possible heating quality at the lowest possible price. The biggest difference between the ICONIC and the SmartLine series lies in the mechanical structure of the respective panels. By using different materials, we may offer our SmartLine panels at reduced prices without having to accept significant trade-offs as regards their heating and general quality. Consequently, both panels are made to be used in-doors and fulfill all requirements to be safe to use in wet rooms or to be mounted on the ceiling.

When it comes to our ICONIC series, the mechanical stability of the panels mostly results from their high-quality steel sheet edges. For the SmartLine, we achieve the same stability by means of its special frame and additional mounting studs. As regards the thermal insulation between the front and rear panels, our SmartLine heaters use a thin air buffer as well as an IR reflector, while our ICONIC panels incorporate a specific insulation body.

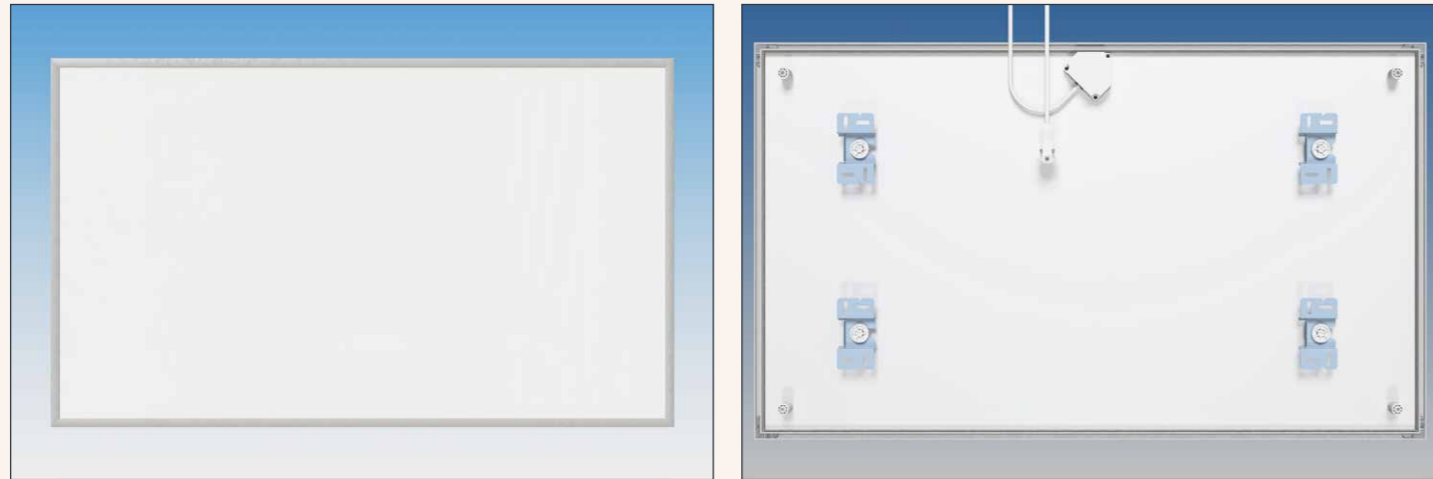
Both series feature a coated front with high IR-emissivity. The SmartLine's rear panel has a metallic surface and therefore a lower IR-emissivity, just like the anodized metal frame. Since ICONIC's rear panel is coated, a higher degree of IR-radiation is emitted towards the wall. That means that the ratio between radiation and convection heat slightly shifts towards convection heat. For both panel types, however, the total heat emitted to the room complies with their respective type specifications.



## Structure of the new Heat4All SmartLine Infrared Panel

1. Coated steel front with high IR radiation ratio and high UV persistence
2. High-quality heating element with Constantan heating conductor
3. Air buffer insulation with IR reflector
4. Uncoated aluminum rear panel
5. Special frame for stability and visual appeal
6. Sturdy and flexibly adjustable mounting system

# OUR NEW HEAT4ALL SMARTLINE MODELS



## PRODUCT SPECIFICATIONS

Surface: sheet steel, powder-coated  
 Rear panel: aluminum, untreated  
 Field of application: direct heating  
 Surface temperature: approx. 90° C to 110° C  
 Voltage: 230 Volt, 50/60 Hz  
 Colour: white  
 Safety specs: IP 45, protection class 1  
 Temperature protection: 1-2 sensors, depending on heater dimensions  
 Power supply: Type CEE 7/7 tilted; cable length: 1.9 m

Certificates:



## INSTALLATION

wall or ceiling mounting

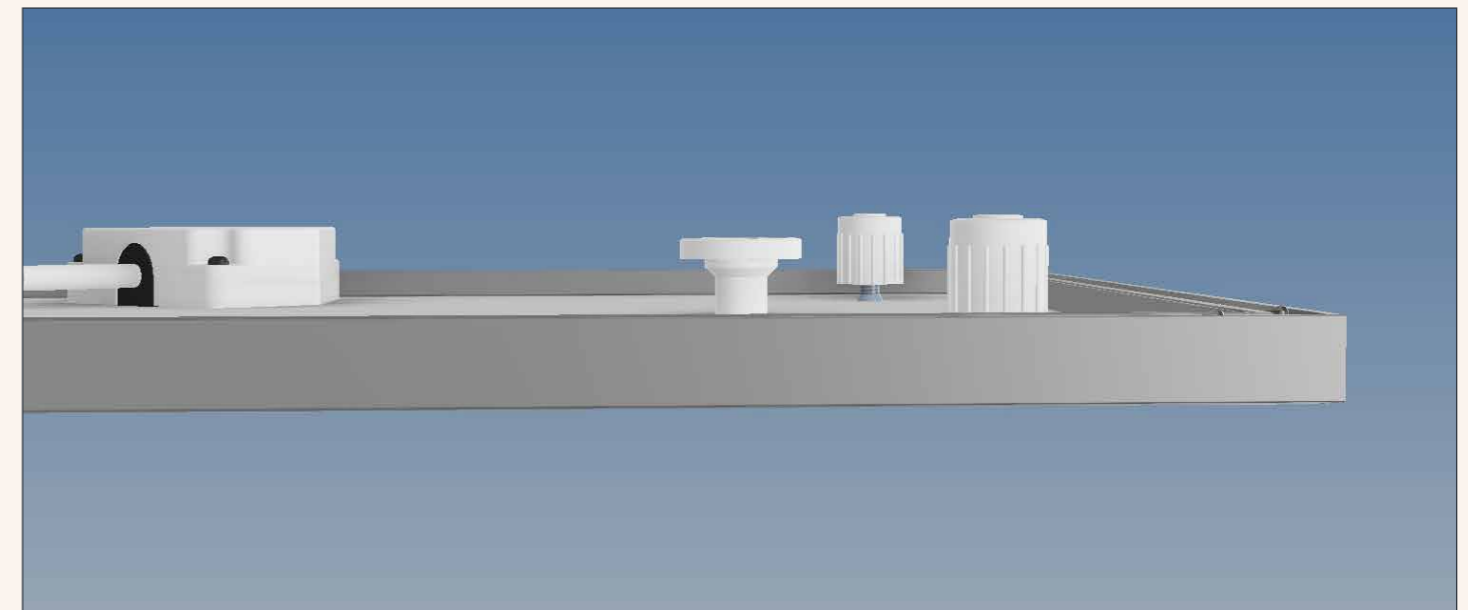
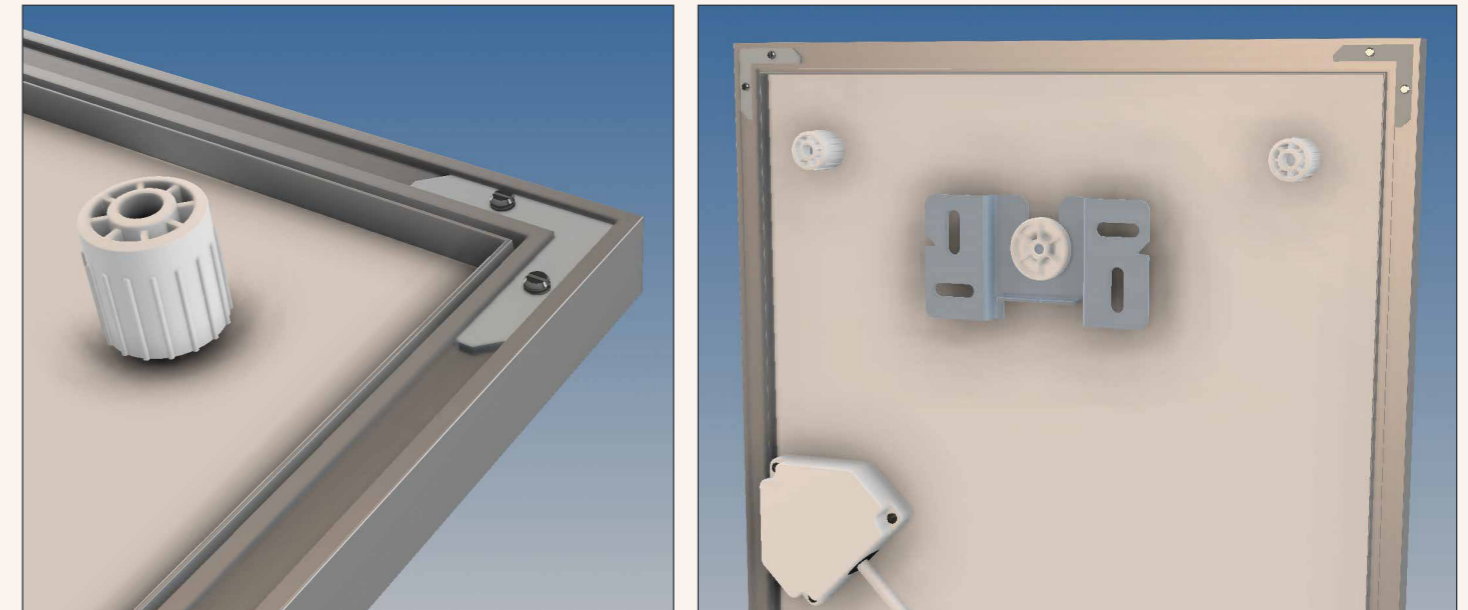
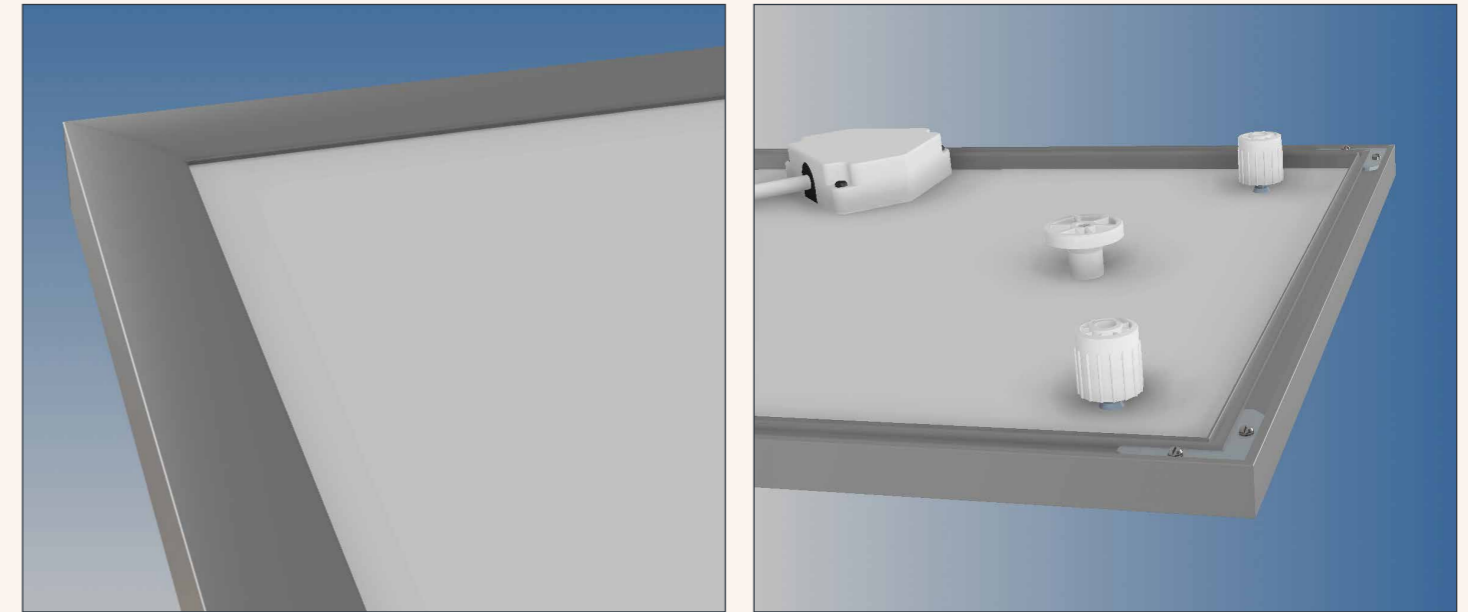
MODEL	DIMENSIONS [mm]	NOMINAL OUTPUT [W]	WEIGHT [kg]	HEATABLE AREA [m <sup>2</sup> ]
Heat4All SmartLine 175	495 x 350 x 16	170	2.35	2-5
Heat4All SmartLine 320	595 x 595 x 16	320	4.3	4-8
Heat4All SmartLine 520	950 x 615 x 16	520	6.75	8-12
Heat4All SmartLine 700	1100 x 650 x 16	700	8.2	11-19
Heat4All SmartLine 1000	1240 x 815 x 16	1000	11.2	16-24

\*All prices in Euro and ex works.

## CONTROL SYSTEMS

To remotely control your Heat4All SmartLine Paneele we offer our Heat4All as well as HomeMatic thermostats and actuators. For additional info, please take a look at pages 5 and 6 or [www.heat4all.com](http://www.heat4all.com).

## SmartLine Panel Details



## HomeMatic Central Hub

The HomeMatic Central Hub is the centerpiece of the automated control of your Heat4All Infrared Heaters. This innovative device serves as the hub that connects all other components of your user-friendly control system. It can be easily and intuitively programmed via your PC.



## HomeMatic Wall-Mounted Thermostat (wireless)

In order to ensure ideal temperatures in each room, we recommend using our HomeMatic Wall Thermostat. The HomeMatic Wall-Mounted Thermostat allows you to individually set the temperature for each room, be it your cosily warm living room or your comfortably cool bed room. Simply install one HomeMatic Wall Thermostat per room and set it to your preferred temperature.



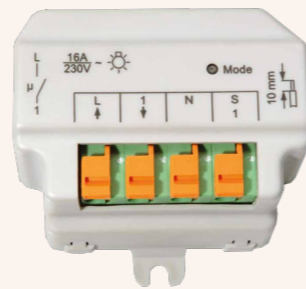
## HomeMatic Adapter Plug Switch Actuator

The HomeMatic Adapter Plug Switch Actuator serves as an adapter between the plug and your Heat4All Infrared Panel. It is super simple to install and immediately connects your infrared heaters to your user-friendly HomeMatic control system.



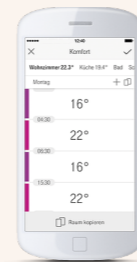
## HomeMatic Flush-Mounted Switch Actuator

The HomeMatic Flush-Mounted Switch Actuator allows you to wirelessly connect your Heat4All Infrared Panels to your HomeMatic control system. To use it, simply install the Flush-Mounted Switch Actuator within the wall right behind your Heat4All Infrared Panel.



## HomeMatic Remote Control via Smartphone, Tablet & PC

For even more comfort, you may program and control all the components of your HomeMatic control system via the HomeMatic remote control app for smartphone, tablet and PC. Turn your heaters on and off, change the temperature settings and monitor your room temperature anywhere and any time with this handy application.



**PLEASE NOTE:** Using HomeMatic Remote Control is only free the first year. The fee you'll be charged after that is determined by HomeMatic and cannot be influenced by Heat4All.



## Heat4All Room Thermostat (wireless)

The H4A Wireless Thermostat allows you to automatically control the temperature settings of your Heat4All Infrared Heaters in your living and office spaces. The H4A Wireless Thermostat is a digital wireless thermostat with green LCD backlight. Its biggest advantage is its simple and flexible installation, no network connection or cable required. The wireless thermostat can be connected to up to 9 receivers/switching elements.

Advantages of the H4A Wireless Thermostat:

- 7 weekly programmes, 6 temperature settings per day
- Simple and flexible installation – no network connection or cable required
- Quick change of temperature settings
- Information on operating hours / childproofing option / button lock
- Different programming for different days possible (Mon-Fri, Sat-Sun and Mon-Sun)
- Frost protection (3° C), low-battery alarm
- Range up to 35 m



## Heat4All Room Thermostat with Rotary Switch (wireless)

The Heat4All Room Thermostat with Rotary Switch allows you to intuitively set your room temperatures by simply turning the rotary switch.



## Heat4All Flush-Mounted Switch Actuator

The Heat4All Flush-Mounted Switch Actuator turns your Heat4All Infrared Panel on or off, based on the data transmitted by the wireless thermostat. Its biggest advantage is its simple installation into a flush-mounted socket.



## Heat4All Adapter Plug Switch Actuator

The Heat4All Adapter Plug Switch Actuator turns your Heat4All Infrared Panel on or off, based on the data transmitted by the wireless thermostat. It is directly plugged into the socket.



## Heat4All Plug-in Thermostat TS 10

The Heat4All Plug-in Thermostat TS 10 brings the convenient control of your Heat4All Infrared Panels to the next level. Apart from setting the temperature of your panels, you may also set up different automated programmes. The Heat4All Plug-in Thermostat offers an excellent price-performance-ratio.